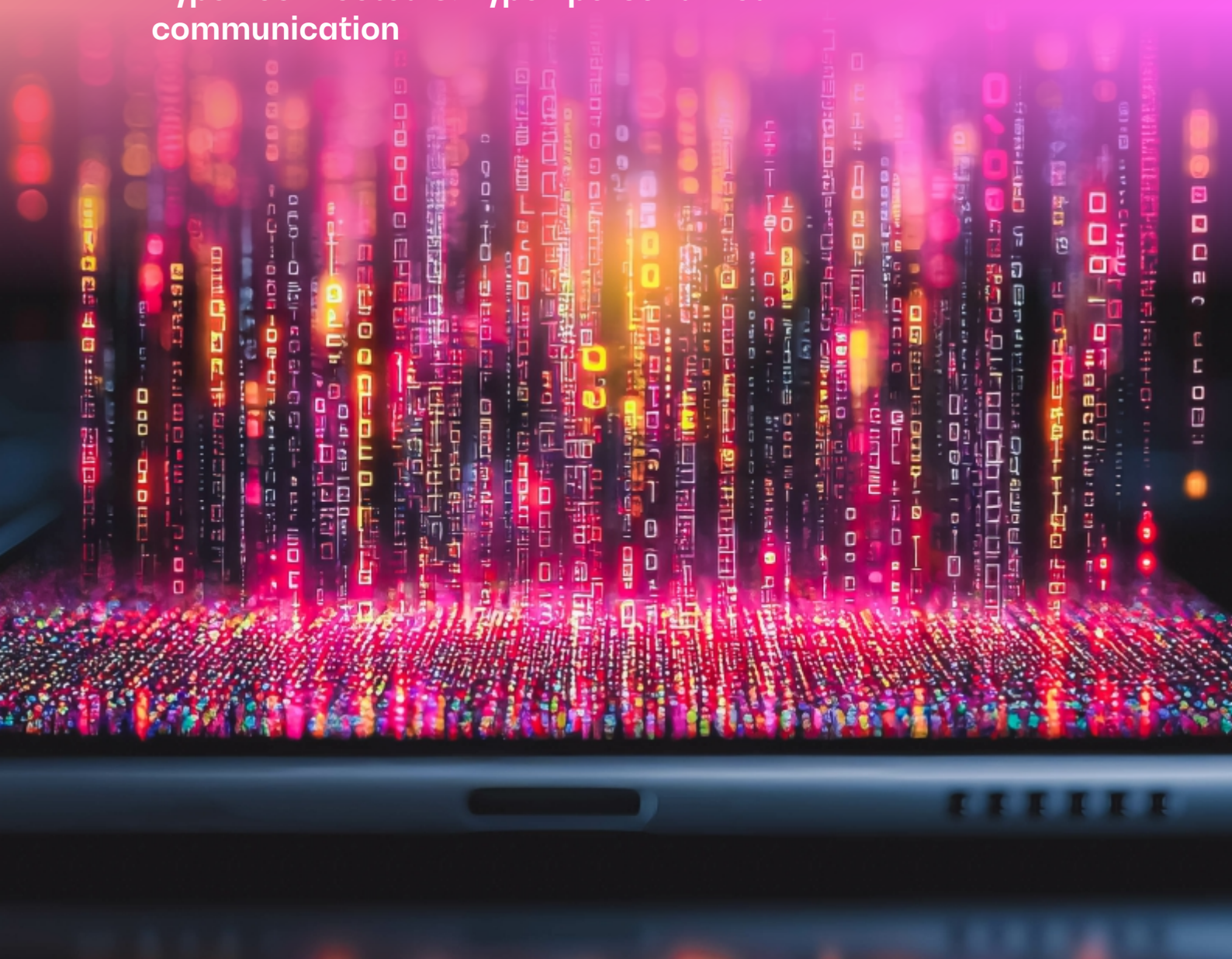




TRUECONNECT: USHERING IN AN AGENTIC AI-POWERED TELECOM FUTURE

A new era of
hyper-connected & hyper-personalized
communication



People don't just connect
to a telecom network;

**livelihoods
depend on it.**

Connectivity powers every facet of people's day in life – from work, to travel, time with loved ones, shopping deals, payments, entertainment, timely decisions, and more. It fuels information, aspirations, and dreams. Beyond bars and bandwidth, people expect intelligence; they demand

**'holistic telecom
solutions'**

that power comfort and convenience. These layered multi-faceted solutions must proactively anticipate, adapt and act.

**It's about
Behavior.
Emotion.
Intention.**

TrueConnect: The Rise of the Agentic AI Telecom Network

Imagine TrueConnect, a novel Telecom realm that's **intelligent, always-on, and personal.**

It understands and adapts to unique preferences and purposes of individuals, families, communities, and businesses. It alerts, notifies, prompts, personalizes, and dynamically levels up interactions, activities, and tasks to holistically enhance livelihood.

At its core, TrueConnect is an Agentic AI-powered telecom backbone; **not a bot, not a digital assistant, but**

self-learning intelligence

that silently optimizes every facet of your phygital life. It's proactive, smart and resilient.

It orchestrates and optimizes your day in life, remediates friction before you feel it, proactively prioritizes what's most important to you, and adjusts your environment before frustration and anxiety surface.

TrueConnect:

Orchestrating the Invisible Symphony of Life

As you wake to a new day, it's already at work. It **optimizes your schedule, meetings, consults, travel routes, mobile plans, subscriptions.** It **syncs with smart devices and home appliances, curates shopping lists,** and more. It reroutes your spouse's 6:00 am call through the nearest edge node, and pauses access to your child's gaming apps until after school.

It's purposeful, proactive, and always one step ahead.

It's your invisible companion on your weekend hike, it secures your home, sets appliances to power savings, guides deliveries to the drop box, monitors garden soil pH, activates drip irrigation, and keeps you updated with alerts and notifications. On your hike, it personalizes navigation pathways, streams your favorite music, pinpoints rest stops, watering holes, and seamlessly enables you to capture, share and sync a canvas of trek highlights across devices.

**TrueConnect:
Beyond Metrics,
from Bars to Livelihood
Enhancement**

Placing the human lexicon at the core, **this Agentic AI-powered telecom backbone auto-syncs calendars, devices, appliances, services, currencies, and time zones while at home or away.** It pivots bandwidth mid-meeting without a hiccup. Your mother's telehealth consult is prioritized to never buffer, it knows it can't afford to.

**It's empowered
livelihood coded into
every byte.**



TrueConnect: A Proactive Command Center

As life gets more connected, needs grow more nuanced, digital identities, security, and privacy become more complex and multi-dimensional. It unifies digital facets in a way that's simple to manage via a single pane of glass.

No more digging through cryptic plans or waiting on hold. Instead, a frictionless nudge:

"Would you like to switch to weekend streaming mode?"

"Shall we add an eSIM with kid-friendly filters to your son's tablet?"

"Suspend international data usage while you're at home?"

Beyond prompts, options and decisions,
it's a telecom solution
that understands.

TrueConnect: Human-like Empathetic Support

Glitches? Gone are the days of generic IVRs and robotic scripts. Support feels human.

It understands intent and context, memorizes issues, and rapidly resolves them in real time. It's the difference between "What's your problem?" and "We already noticed this, tap to fix."

Proactive care
replaces time intensive
reactive probing
which is frustrating.



TrueConnect: The Enterprise Copilot

Industries can no longer thrive with just tools, Agentic telecom levels up CX for all - **dynamically, predictively, and contextually.**

In our digital-first world, software powers everything. Productivity can't rely on connectivity that's a 'one size fits all'. It demands agentic networks and copilots that

continuously monitor, learn, adapt and self-optimize

in harmony with connected systems.

TrueConnect delivers that advantage.

With intelligence woven into every layer of the telecom fabric, it senses when teams are in sprint mode, publishing live builds, or hotfixes.

It **auto-scales bandwidth, edge node elasticity, deprioritizes non-essential traffic,** and **ensures real-time collaboration,** and **remediates conflicts** with agentic intelligence.

This is TrueConnect, in action -

adapting instantly, helping teams ship smarter and faster, whilst making change seamless and invisible

to active end consumer sessions.



TrueConnect:

Accelerated Pharmaceutical Product Lifecycles

Pharmaceutical breakthroughs save lives, they rely on secure and instant collaboration, intelligence, information and insights.

TrueConnect accelerates new life saving product lifecycles.

It unifies insights and next best actions

across scientists, researchers, trial pods, technologists, patient monitors, and IoT wearables leveraging cloud-based systems, data stores and complex analytics.

Agentic intelligence built into the network fabric orchestrates

real-time prioritization

ensuring data flow across trial patient monitors and wearables remains uninterrupted.

In sub-Saharan Africa, a remote clinical trial pod syncs real time patient data with a cloud EDC in Switzerland. When vitals spike, TrueConnect prioritize bandwidth instantly for emergency consults.

TrueConnect in Healthcare: Seamlessly Prioritizing Life

When milliseconds can save a life, networks must do more than connect - they must care.

Intelligent prioritization is the cornerstone of healthcare.

TrueConnect **prioritizes telemetry from smart patches, patient monitors, it routes emergency signals with highest priority, clears navigation pathways to ER, ensures zero interruption to robotic surgeries** and critical care units.

A hospital network running remote surgeries uses TrueConnect's prioritized edge nodes to maintain ultra-low latency. Meanwhile, non-critical systems are automatically throttled down during high-urgency periods.

Healthcare running on TrueConnect,

knows what's urgent and adapts without human intervention.

Manufacturing: From Operational Awareness to Intelligent Factories

Production lines no longer run in siloes - they run with intent, context and intelligence. At a Mega factory, TrueConnect's command center

monitors thousands of telemetry signals across the production floor.

When early signs of overheating emerge in a welding unit, it **dynamically steps up bandwidth to the predictive maintenance system** - triggering alerts, suspending affected lines, and auto-routing diagnostic data to regional centers for corrective action.

When multiple factories sync for a coordinated product launch, TrueConnect's embedded agentic intelligence **identifies surges in real time**. It **scales edge node availability across facilities, prioritizes bandwidth for critical lines, and temporarily suspends low-priority jobs.**

TrueConnect's manufacturing intelligence

predicts, adapts, and elevates productivity without pause.

Entertainment & Sports: Live Moments, Streamed on Intelligent Infrastructure

In stadiums and arenas, traditional connectivity isn't enough - you need a network that performs with the fans.

TrueConnect

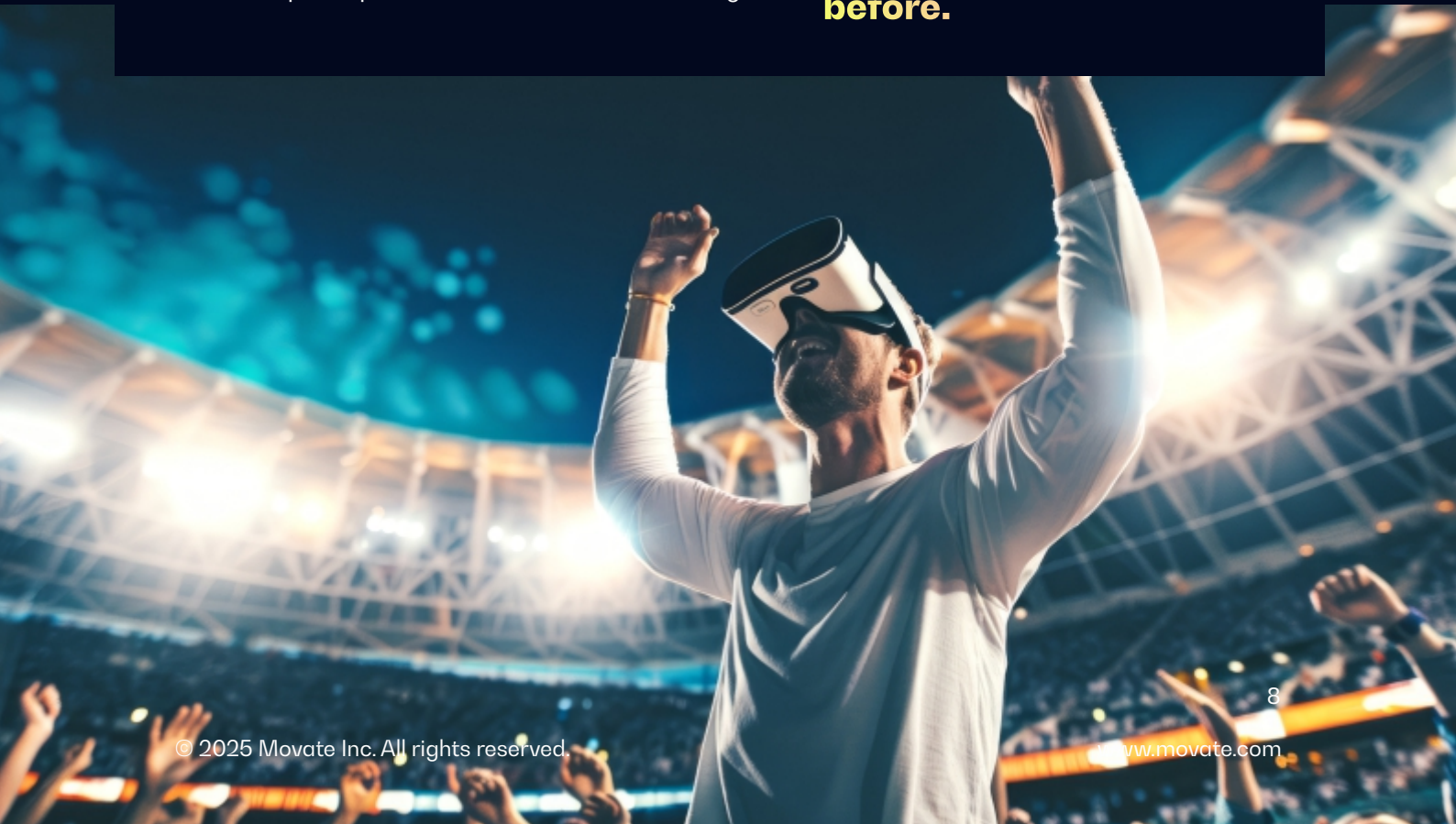
responds to footfall, high intensity moments, streaming surges, and AR interactions in real time.

It **dynamically levels up bandwidth mid-play**, ensuring flawless hi-res broadcasting, live streaming, on-demand replays, AR overlays, uninterrupted uploads, and instant social sharing.

Streaming capacity is automatically boosted during critical game moments. remote VR feeds receive prioritized access, alerts dynamically guide broadcaster cameras to capture fan engagement and sentiments across the arena.

TrueConnect enhances every game-day moment with

intelligence to level up emotions, excitement and engagement like never before.



Esports & Streaming: TrueConnect Networks That Never Lag

Electronic sport doesn't forgive latency, and neither does TrueConnect.

Built on an agentic telecom backbone, it **instantly recognizes when high-performance sessions begin.**

It dynamically allocates jitter-free low-latency bandwidth to ensure frame-perfect responsiveness.

During global ESports events, **local edge node elasticity scales proactively**, ensuring uninterrupted gameplay.

For streamers, **bandwidth is prioritized** and intelligently compressed to maintain visual fidelity even at peak network load.

This is immersive gameplay without compromise, delivered over

a network that understands precision, responds instantly, ensuring competitors and creators flow.

Retail: CX Scaling at the Speed of Demand

Retail traffic is bursty and unpredictable. Traffic surges during flash and seasonal sales and on weekends, especially at the beginning of the month. TrueConnect's intelligence

senses retail pulse spikes across phygital touchpoints to self-optimize customer journeys.

Agentic AI-powered edge nodes **instantly ramp up for in-store POS, ERP, CRM, loyalty and rewards systems, AR experiences, and mobile apps.** These systems are prioritized over an ultra-low latency network to power purchase flows and last-mile fulfillment instantly.

It **powers dynamic pricing updates** and **real-time inventory visibility** across stores - without human intervention.

Customer feedback from mobile apps, and smart kiosks are instantly routed through the network's feedback loop. Based on insights gleaned, it **optimizes future promotions** to alternate content strategies and product bundles.

TrueConnect elevates every micro-interaction into delightfully-connected moments.



Smart Cities: Urban Intelligence, Enabled by Telecom

Cities need smart infrastructure,
TrueConnect enables

**intelligently connected
infrastructure that is
proactive and purposeful.**

It **synchronizes emergency urban departments** on the ground and in the air, routing fire safety vehicles, ambulances, doctors and paramedics to affected areas. It **reroutes regular traffic**, prioritizes traffic lights for emergency services, **broadcasts information to urban populations**, activates readiness across hospital and care facilities, and directs support staff to affected areas.

Smart home syncs keep homes and suburbs safe, informing law enforcement, neighbors and local communities of untoward incidents and safety procedures. IoT-enabled aquaponics and hydroponics monitor soil pH to drip irrigate home gardens and vegetable patches. Smart grids throttle power as required to affected areas. During monsoons, flood sensors send alerts to local authorities for evacuation procedures.

**TrueConnect interweaves
intelligence into every
infrastructure layer to interpret
and optimize proactive service
without human intervention.**

Trust, Secured by the Telecom Stack

Security and trust isn't an overlay - It's the foundation for every intelligent interaction.

TrueConnect integrates blockchain-backed digital identities,

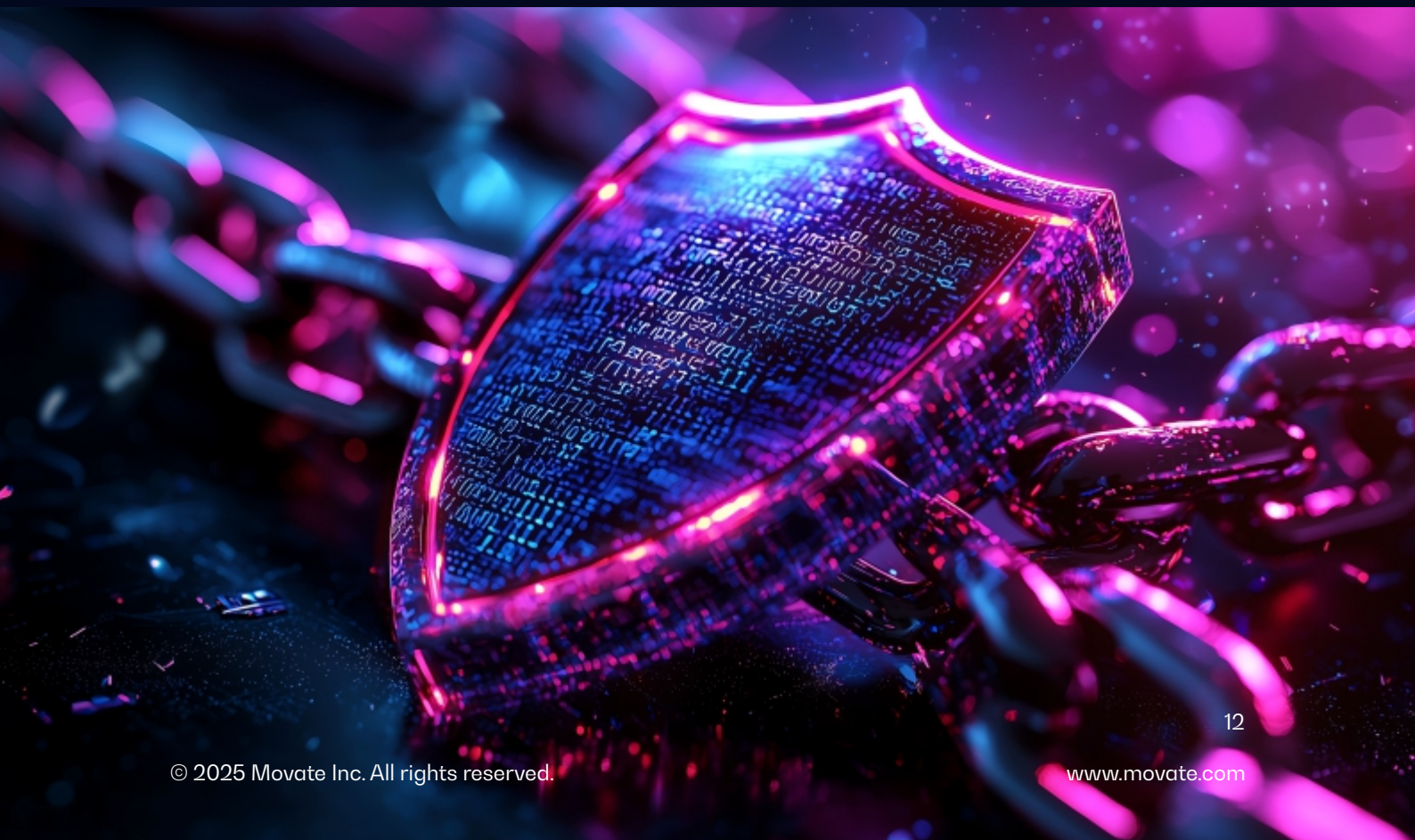
zero-trust access frameworks, and encrypted communication protocols directly into its foundational architecture.

This ensures everything from **SIM provisioning, private and enterprise VPNs are secured** and **trustworthy**.

The network constantly verifies, isolates, and adapts to emerging threats, functioning as a self-defending system. It doesn't wait for breaches; it anticipates them.

Trust isn't a feature -

it's the foundation, deeply embedded into the way TrueConnect connects the world.



From Passive Connectivity to Intelligent Enablement

In every industry, effectiveness is built atop one invisible force: the network.

From patient monitoring to predictive maintenance, from immersive retail to self-adapting cities—TrueConnect doesn't simply support the future of livelihood, it makes it possible.

Always aware. Always adaptive. Always aligned with what matters most.

This is TrueConnect, a conscious, intelligent, connected fabric transforming livelihood across the world we live in, and beyond.

About The Author



Krishnan Gopalrao
Vice President,
Propel Labs Practice

Krishnan Gopalrao leads Propel Labs, Data + AI and Digital Engineering COEs at Movate AI. An avid GenAI and AI/ML expert with various real time experience and expertise; He has over 25+ years of industry experience spanning various technologies, innovation and platform developments. He partners with various customers in bringing right solutions and technologies to solve business problems and improve customer satisfaction.

About Movate

Movate is a digital technology and customer experience services company committed to disrupting the industry with boundless agility, human-centered innovation, and a relentless focus on driving client outcomes. Recognized as one of the most awarded and analyst-accredited companies in its revenue range, Movate helps ambitious, growth-oriented companies across industries stay ahead of the curve by leveraging its world-class talent of over 12,000+ full-time Movators across 21 global locations and a gig network of thousands of technology experts across 60 countries, speaking over 100 languages.

For more details, please mail us at info@movate.com